

4th BALTIC SEA 2012

International Hands-on Course on FULL
HD Endoscopic Neurosurgery



30 May – 1 June 2012

Departments of Neurosurgery and Anatomy
Greifswald, Germany

INVITATION



Dear colleagues,

It is a great pleasure to invite you to our practical hands-on training course for cranial endoscopic neurosurgery in Greifswald. The course is designed for neurosurgeons who have no experience with endoscopic neurosurgery as

well as for surgeons who have already started with endoscopy and want to improve their knowledge and skills. Therefore, ample time will be provided for hands-on dissection in cadaver specimens. After a theoretical introduction to the topic, training in various neurosurgical interventions including ventricular endoscopy, endoscope-assisted skull base surgery and endonasal pituitary surgery under HD-visualization will be given.

After the course participants should be able to discuss the latest advances and controversies in endoscopic and endoscope-assisted neurosurgery.

I am looking forward to welcoming you in Greifswald in May 2012.

A stylized, handwritten signature in white ink, consisting of several fluid, overlapping strokes.

Henry W. S. Schroeder

MAIN FEATURES OF THE COURSE

- Lectures on endoscopic anatomy, endoscopic equipment, and endoscopic as well as endoscope-assisted surgical techniques
- Video demonstration of various endoscopic techniques
- Hands-on dissection on cadaver specimens including intraventricular, subarachnoid, and endonasal approaches
- Live surgeries with pre- and postoperative discussion of the cases, analysis and importance of surgical planning for endoscopic approaches
- Written anonymous evaluation of the course
- All workstations equipped with the latest High Definition (FULL HD) technology
- 2 participants per workstation



COURSE TOPICS

- Technical basics of neuroendoscopy and HD-visualization
- Intraventricular endoscopy
- Endonasal endoscopic pituitary surgery
- Endoscope-assisted microsurgical skull base surgery
- Live operations of intraventricular and skull base approaches

PROGRAM

Wednesday, 30 May, 2012

- 08:00 a.m. Registration
- 08:30 a.m. Welcome
- 08:35 a.m. History of Neuroendoscopy
- 08:50 a.m. Current technology of endoscopy and HD-visualization
- 09:10 a.m. Concept of neuroendoscopy and endoscope-assisted microsurgery
- 09:35 a.m. Intraventricular anatomy
- 09:55 a.m. Coffee break
- 10:10 a.m. **Lab I**
Endoscopic instrumentation and set-up Endoscopic exercises on head models
- 11:40 a.m. Endoscopic third ventriculostomy
- 12:10 p.m. Aqueductoplasty, stenting, and septostomy
- 12:40 p.m. Intraventricular tumors
- 01:10 p.m. Lunch
- 02:10 p.m. Arachnoid, pineal, and parenchymal cysts
- 02:40 p.m. Colloid cysts
- 03:10 p.m. Coffee break
- 03:25 p.m. **Lab II**
Intraventricular endoscopy
- 05:25 p.m. Demonstration of anatomic specimen
- 07:30 p.m. Dinner

Thursday, 31 May, 2012

- 08:00 a.m. Anatomy of the paranasal sinus and sellar region
- 08:20 a.m. Endonasal endoscopic skullbase surgery – technique and indication
- 09:00 a.m. Live surgery: Endonasal endoscopic skullbase surgery and intraventricular endoscopy and/or endoscope-assisted skull base surgery
- 10:45 a.m. Coffee break
- 11:00 a.m. Live surgery
- 01:00 p.m. Lunch
- 02:00 p.m. **Lab III**
Endonasal endoscopic skullbase approach
- 05:00 p.m. Coffee break
- 05:15 p.m. Anatomy of the suprasellar region
- 05:35 p.m. Endoscope-assisted microsurgical skull base surgery of the suprasellar region - technique and indications
- 06:05 p.m. **Lab IV**
Endoscope-assisted skull base surgery: Supraorbital approach
- 08:00 p.m. Dinner



Friday, 1 June, 2012

- 08:30 a.m. Anatomy of the cerebellopontine angle
- 09:00 a.m. Endoscope-assisted microsurgical skull base surgery of the CP angle – technique and indications
- 09:30 a.m. Coffee break
- 09:45 a.m. **Lab V**
Endoscope-assisted skull base surgery: Retrosigmoid approach
- 11:45 p.m. Complications and avoidance
- 12:00 p.m. Lunch
- 01.00 p.m. Case discussions
- 02.15 p.m. Closing remarks
- 02.30 p.m. End of the course

COURSE DIRECTOR

Henry W. S. Schroeder, M.D., Ph.D.
Department of Neurosurgery
Ernst Moritz Arndt University, Greifswald

SPECIAL GUESTS

Mark M. Souweidane, M.D., F.A.C.S.
Department of Neurological Surgery
Weill Medical College of Cornell
University
New York, USA

Martin Bettag, M.D., Ph.D.
Krankenhaus der Barmherzigen Brüder
Trier, Germany

FACULTY

Jörg Baldauf, M.D.,
Department of Neurosurgery, University
Greifswald

Michael Fritsch, M.D., Ph.D.,
Department of Neurosurgery
Neubrandenburg

Thomas Koppe, M.D., Ph.D.,
Institute of Anatomy,
University Greifswald

Bärbel Mieke, M.D.,
Institute of Anatomy,
University Greifswald

Veit Rohde, M.D., Ph.D.,
Department of Neurosurgery, University
Göttingen

Course Location

Institute of Anatomy
Fr.-Loeffler-Str. 23
17475 Greifswald, Germany

See more than you expected – HD in Neurosurgery

IMAGE 1
HD

The Best Viewing Experience

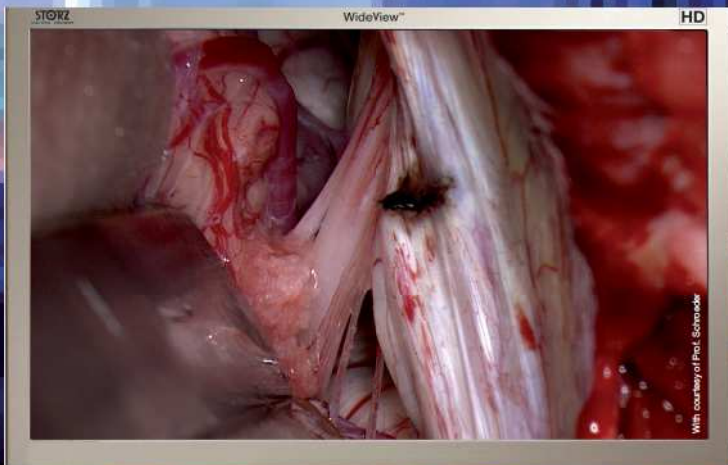


IMAGE1™ FULL HD can emulate 3-D views

A critical element in successful procedures and ensuring positive outcomes is the ability of endoscopy systems to clearly render human anatomy, enabling surgeons to easily recognize landmarks and assess pathologies. HD endoscopy, with its superior clarity and color contrast, enhances visualization.

Images reflecting the 1080p50 Full HD standard (American standard 1080p60) are capable of emulating 3D views because of their higher depth perception and color contrast that help surgeons better differentiate anatomical planes.

Anatomical structures that are not normally visible on flat SD images become more distinguishable and can be recognized more easily.

The highest resolution possible – 5 times greater than the standard – combined with the 16:9 format guarantees brilliant picture quality and larger display details.

STORZ
KARL STORZ – ENDOSKOPIE
THE DIAMOND STANDARD

REGISTRATION

4th Baltic Sea 2012

International Hands-on Course on Cranial Endoscopic Neurosurgery Greifswald, Germany, 30 May - 1 June, 2012

A maximum of 30 participants will be enrolled.

Requests for admission must be sent to the organizing secretary by fax or e-mail.

Participants will be accepted on a first come, first served basis. Accepted participants will receive a confirmation from the organizing secretary.

Final confirmation of participation will be sent only after receiving the full payment.

Registration Deadline: 1st March 2012

Name: _____ Degree: _____

Institute/Department/Mail address: _____

City/Postal code: _____ Country: _____

Phone: _____ Fax: _____

E-Mail: _____

Register via e-mail or fill out and fax this form to:

Elke Rösel

Department of Neurosurgery • Ernst Moritz Arndt University

Sauerbruchstraße • 17475 Greifswald • Germany

E-Mail: Elke.Roesel@uni-greifswald.de • Fax: +49 3834 86-6164

Course fee

1,300 Euros (incl. VAT). The course fee includes

- auditorium facilities
- course material
- all meals incl. coffee breaks, lunch, dinner
- 3 nights hotel accommodation (29 May - 1 June, 2012)
- hands-on dissection on cadaver specimens.

Please transfer the participation fee after receipt of the confirmation within 14 days to the following account:

Account holder: EMAU Greifswald
Sparkasse Vorpommern Greifswald
Account No. 23 000 54 54
Bank code number: 150 505 00

Reference: Baltic Sea 2012 DRM-KNCH03
IBAN: DE 46 150 505 000 23 000 54 54
SWIFT: NOLADE 21 GRW.

Cancellation terms

In case of written cancellation before 1st March 2012 the amount will be refunded less 100 Euros for administrative expenses. Later refunds will not be possible.

ORGANISATION

Prof. Henry W. S. Schroeder
Ernst Moritz Arndt University
Department of Neurosurgery
Sauerbruchstraße
17475 Greifswald
Germany

KINDLY SUPPORTED BY



STORZ
KARL STORZ – ENDOSKOPE
THE DIAMOND STANDARD

 **BRAINLAB**

 **INTEGRA**

 **Medtronic**